



INFORMATION FOR RECOGNITION OF DISEASE-FREE STATUS FOR CATEGORY C DISEASES OF AQUATIC ANIMALS IN ACCORDANCE WITH CHAPTER 4 OF PART II OF [REGULATION \(EU\) 2020/689](#) AND ARTICLE 11 OF COMMISSION IMPLEMENTING [REGULATION \(EU\) 2020/2002](#)

Requirements and information	Information, explanation and justification
Identification of the programme	
1. Date of submission	24 November 2021 Updated 25 November 2021 with point 11 b
2. Name of Member State and details of contact point	Denmark Danish Veterinary and Food Administration (DVFA), Stationsparken 31-33, 2600 Glostrup. Phone: +45 72276900. E-mail: 14@fvst.dk
3. Name of Category C disease	IHN – Infectious Haematopoietic Necrosis
4. Identification of the grounds for recognition of disease-free status	Continued IHN free status of a historically free compartment under surveillance conducted in accordance with Annex VI, part II. (d) Completion of an eradication programme
5. Territorial scope of the eradication programme	(b) Compartment <u>Address:</u> Holmegårdsvej 25 Hyllebjerg 9640 Farsø Denmark CHR: 103587 <u>Coordinates:</u> Latitude: 56.81 Longitude: 9.33

	<p><u>Farm details:</u> Farm production: Brood stock Water supply: Drilling Discharge of effluents: Stream</p> <p><u>Farm productivity:</u> Brood stock: 5,000 (kg/y) For human consumption: 13,350 (kg/y) Nursery: 379,703 (kg/y)</p> <p><u>Description of compartment:</u> The compartment consists of three buildings and an outdoor brood stock area with several ponds. The buildings are used for nursery, where one building consists of two separate units.</p> <p>The dead fish tank is located within the premises of the compartment.</p>
--	---

6. Dependency of compartments

(a): Independent compartments as referred to in point (a) of Article 73(2) of Regulation (EU) 2020/689

<p>(i) The water is supplied through a water treatment plant which inactivates the relevant pathogen or that the water is supplied directly from a well, a borehole or a spring</p>	<p>The water is supplied from a drilling. The water is channelled from the drilling in closed piping to the buildings. The water supply has no risk of migrating aquatic animals.</p>
<p>(ii) Where such water originates from a source outside the establishment, it is channelled directly to it by means which afford appropriate protection from infection</p>	<p>Not applicable. See (i).</p>

<p>(iii) There are natural or artificial barriers that prevent aquatic animals from entering each establishment in the compartment from surrounding natural waters</p>	<p>Inlet: see (i) Outlet: Outlet water drains from ponds through overflow piping, settling ponds, plant lagoons, and a 10 mm grating before the outlet into Trend stream. These barriers prevent aquatic animals to enter the ponds from the stream.</p>
<p>(iv) Where appropriate, the establishments in the compartment are protected against flooding and infiltration of water from surrounding natural waters</p>	<p>Due to the location of the compartment above the recipient water (Trend stream), there is no risk of flooding.</p>

7. Statement

Statement confirming that the relevant general criteria in accordance with point (a) of Article 73(1) of that Regulation for aquatic compartments, are complied with since 1 April 2016 or longer

- (i) The territorial scope complies with point (c) of Article 47(2) of Regulation (EU) 2020/689;
- (ii) The surveillance for the disease complies with the requirements laid down in Articles 3(2), 4 and 6 to 9 of Regulation (EU) 2020/689; Until 21 April 2021 Denmark had Danish legislation based on the Implementing decision (EU) 2015/1554 (referring to Council Directive 2006/88/EC), and respectively Regulation 2017/625 and Regulation 2004/854. Furthermore, Denmark has an executive order no. 1324 of 26/11/2015, replaced by executive order no. 1451 of 12/12/2019 according to Council Directive 2006/88/EC.
- (iii) Operators comply with obligations as regards biosecurity measures as laid down in Article 10 of Regulation (EU) 2016/429; and Danish executive order no. 965 of 18/07/2013.
- (iv) Operators comply with the disease control measures relevant for the disease in the event of a suspicion or confirmation. Delegated Regulation 2020/689 and Danish executive order no. 1324 of 26/11/2015, replaced by executive order no. 1451 of 12/12/2019 according to Council Directive 2006/88/EC.
- (v) The establishment comprising the compartment was approved in 2001. The establishment has been approved according to Danish executive order no. 965 of 18/07/2013 since it has been applied.

	<p>(vi) Traceability of the animals from the targeted animal population is ensured.</p> <p>(vii) When moved, the animals from the targeted animal population or products thereof complied with the animal health requirements for movement within the Union or for entry into the Union of those animals and products thereof, and Danish executive order no. 965 of 18/07/2013.</p>
--	--

11. When the grounds for recognition of disease-free status is based on the completion of an eradication programme, for each year of the programme, information must be supplied concerning:

(a) the aquaculture establishments and where relevant, the sampling points in the wild in the zone/compartment:

<p>(i) Number of approved aquaculture establishments in the programme</p>	<p>There is one approved aquaculture establishment in the compartment.</p>
<p>(ii) Maps showing approved and registered aquaculture establishments, and where relevant, sampling points in the wild</p>	<p>See map of compartment.</p>
<p>(iii) Number of aquaculture establishments, and where relevant, sampling points in the wild, out of the total number of aquaculture establishments and sampling points in the wild, which are not infected</p>	<p>One out of one aquaculture establishment in the compartment is not infected.</p>
<p>(iv) Number of aquaculture establishments, and where relevant, sampling points in the wild, out of the total number of aquaculture establishments and sampling points in the wild, with confirmed cases</p>	<p>The establishment has no confirmed cases.</p>

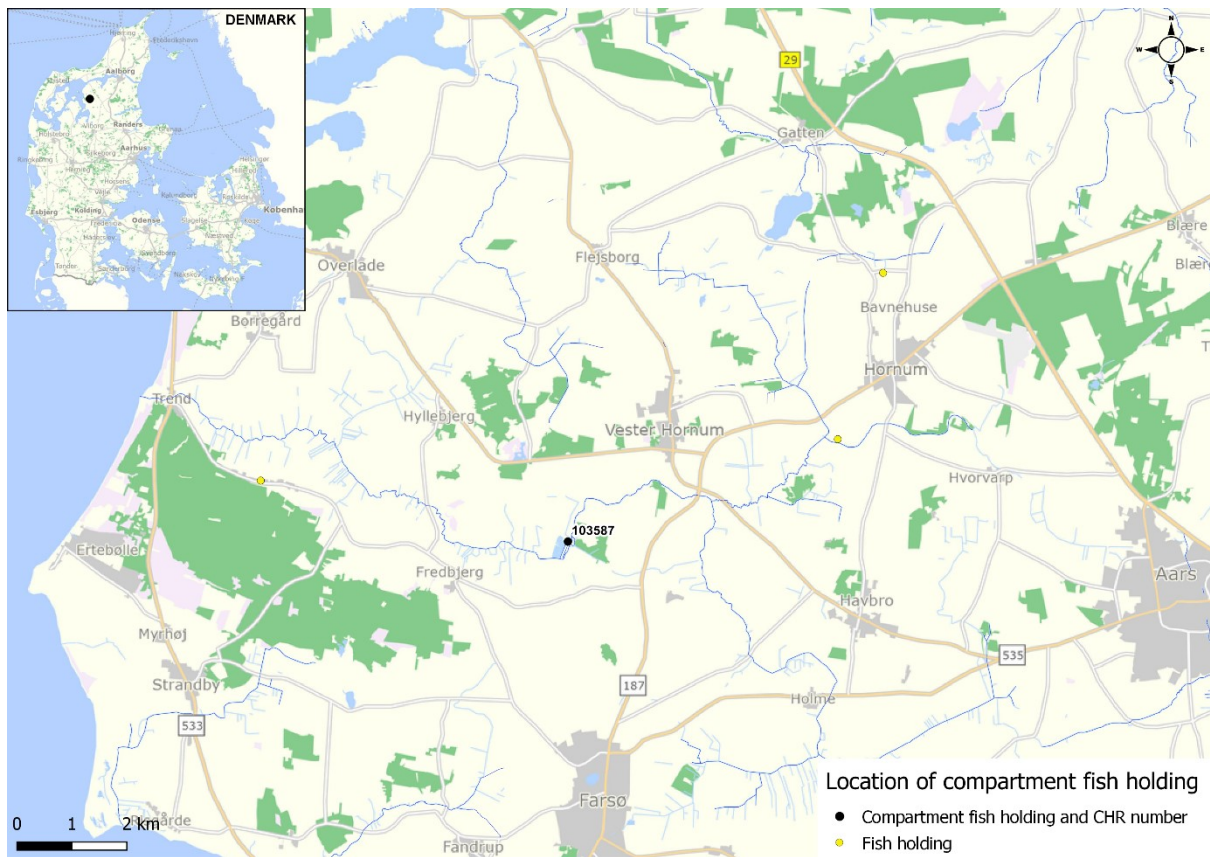
<p>(v) Number of new aquaculture establishments, and where relevant, sampling points in the wild, out of the total number of aquaculture establishments and sampling points in the wild, with confirmed cases</p>	<p>There are no new aquaculture establishments in the compartment with confirmed cases.</p>
<p>(b) animal health visits and sampling which have been completed</p>	
<p>(i) Number of health visits per approved and where relevant, per registered aquaculture establishment</p>	<p>See table. Since 21 April 2021, the establishment has been subject to health visits according to Delegated Regulation 2020/689, annex VI, part II, Chapter 1, section 4 and 5. Until 21 April 2021, the establishment has been subject to health visits and sampling according to executive order no. 1324 of 26/11/2015, replaced by executive order no. 1451 of 12/12/2019 (according to Council directive 2006/88/EC).</p>
<p>(ii) Number of samplings per approved, and where relevant, per registered aquaculture establishment, or samplings in wild populations</p>	
<p>(iii) Number of animals sampled at each sampling event</p>	
<p>(iv) Species sampled</p>	
<p>(v) Results from each laboratory examination (positive/ negative for the pathogen in question)</p>	
<p>(vi) Results from each clinical inspection</p>	
<p>(vii) Water temperature at the time of sampling</p>	

Table of animal health visits and sampling completed since 1 April 2016

Health visits	Samplings	Animals tested per sampling	Species sampled	Result of laboratory analysis	Result of clinical inspection	Water temperature at sampling
1*	1*	30	Rainbow trout	Negative	No clinical signs of IHN	14 °C or below

* Per year, at least.

Map of compartment and location in Denmark:





Blå markering svarer til ydre afgrænsning af anlæggets matrikel: The blue marking defines the outer limits of the facility; This defines the compartment

Parkering besøgende: Parking for visitors

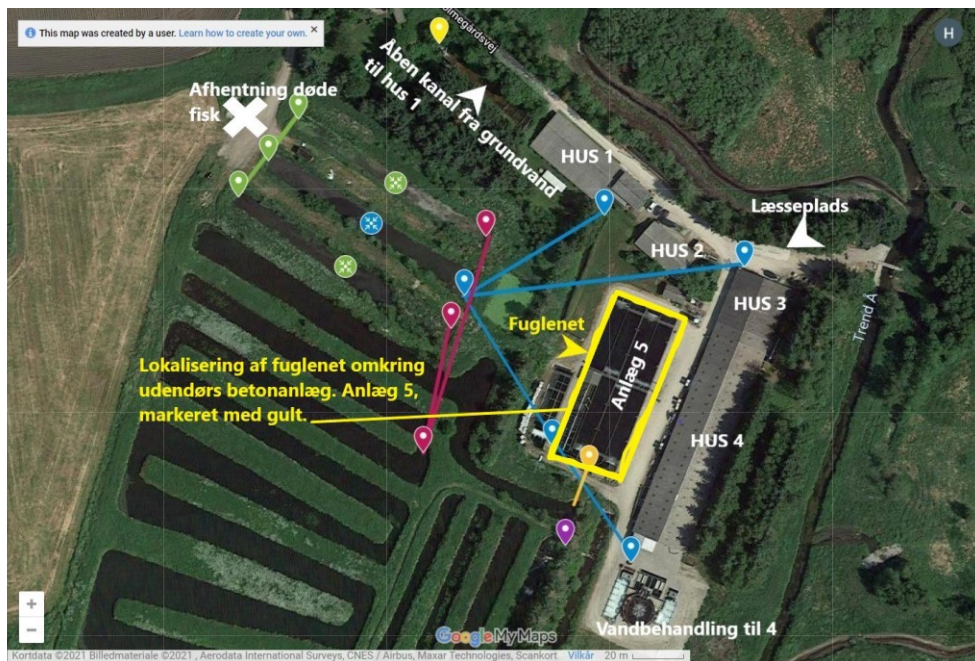
Vand fra anlæg 5: Water from facility 5 (outdoor brood stock area)

Overløb fra slambed: Overflow piping from settling pond

Retning af vand gennem plantelagune: The direction of water running through the plant lagoons

Vand samlet fra plantelagune løber tilbage og frem til afgitret udløb gennem sidste to lige kanaler: The water from the plant lagoons runs back and through the last two straight channels, where it reaches the grating at the outlet

Udløb til Trend Å: Outlet to Trend stream



Hus 1/2/3/4: House nr 1/2/3/4

Anlæg 5: Outdoor brood stock facility

Åben kanal fra grundvand til hus 1: Open channel from groundwater drilling to house 1









Afhentning døde fisk: pick up for dead fish (white cross)

Læsseplads: Spot for loading/unloading

Vandbehandling til 4: Water treatment for house 4

Fuglenet: Net against birds

Lokalisering af fuglenet omkring udendørs betonanlæg. Anlæg 5, markeret med gult: The yellow line indicates the fencing and the net against birds around the outdoor facility. Facility 5, marked with yellow

-  Mud trap/mud from mud traps and houses
-  Mud storage/settling pond
-  Outlet for excess water from settling pond/inlet of excess water
-  Settling pond
-  Outlet from settling pond/outlet of water from settling pond
-  Pump for drainage water from the production
-  Outlet from plant lagoons
-  Inlet